

Longwall Visual Analysis

Information Sheet



How to Enter New Licence Code

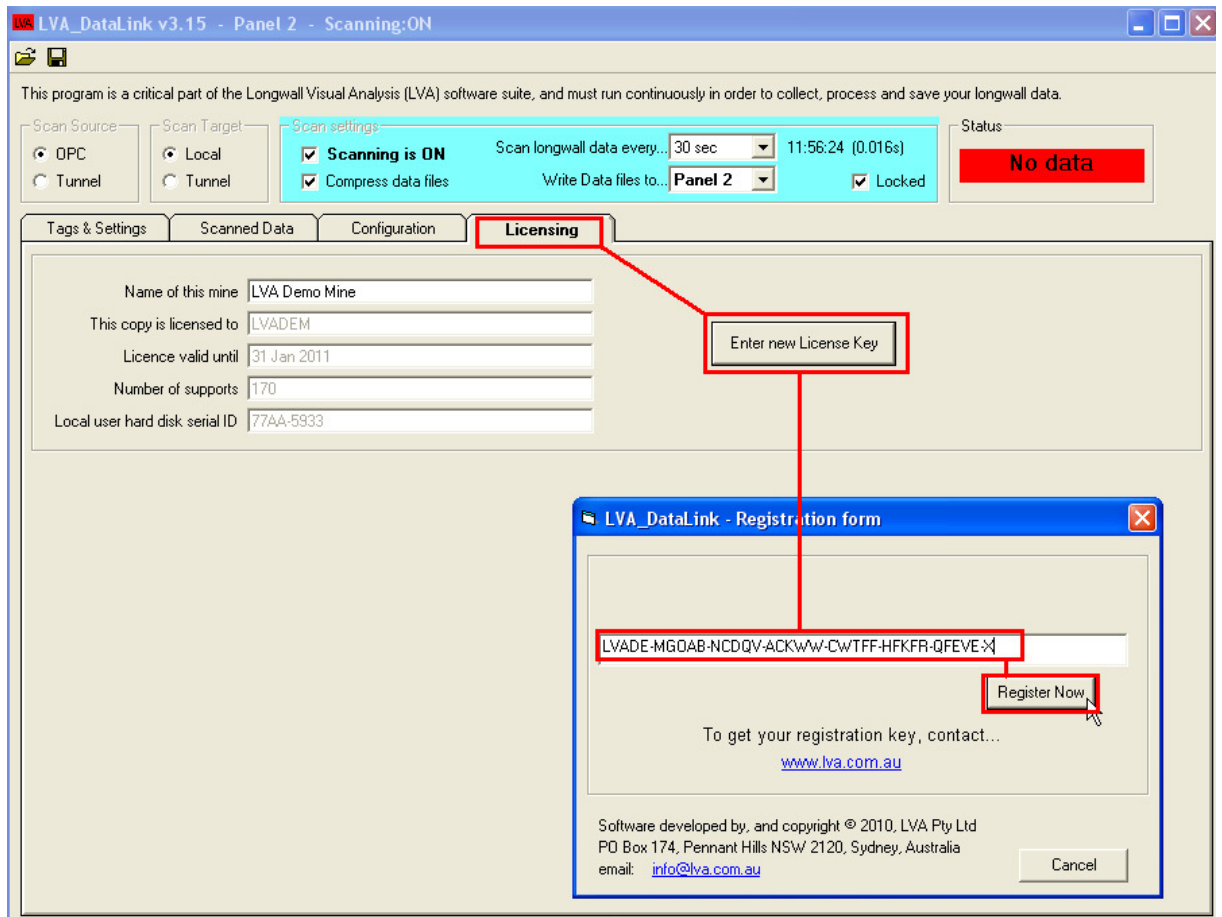
Revision 1, 21 October 2010

1. This How-to outlines the process to enter a new licence code into the LVA Datalink software

2. Details

To update LVA, do the following steps..

- Go to **LVA_Datalink** on the main LVA computer/server.
- Click “Licensing” and “Enter new License Key” as shown in the screen shot below
- Copy & paste the supplied license code, then click “Register Now”.
- If all okay make sure scanning is ON and the screen shows a green box at right (it’s red in the screenshot below)
- Should be done. Close & reopen the LVA program. Keep a watch for a few minutes to see if it starts updating with new data.
- Note: datalink password if required is – “datalink”



Click on Licencing, Enter new Licence Key, Enter Licence Code then Register Now.